

TotalGrow™ HI-Top 320 & 620

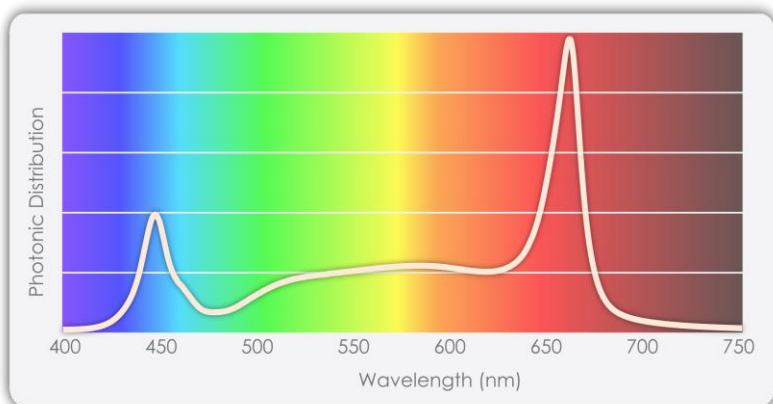


Performance Grow Lighting that Saves

Achieve your target yields and quality.

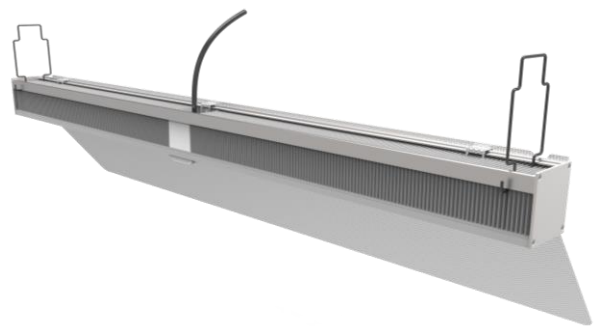
Save time, money, electricity, and sales.

- 320W or 620W power at 2.8+ $\mu\text{mol}/\text{J}$ for the light intensities your plants need
- Robust, reliable and streamlined design for simple utilization
- Side reflector add-on for uniform, efficient edge lighting
- Full spectrum for exceptional versatility



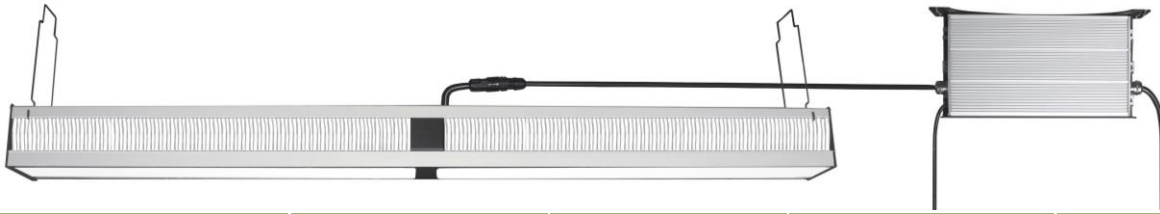
Spectrum/Power/Efficacy Customization Available



HI-Top 620 with edge-lighting side reflector



contact: info@totalgrowlight.com





The TotalGrow HI-Top generates an ideal light spectrum for diverse supplemental and sole source applications with a versatile output pattern, exceptional efficiency and profound total value in a pleasant work environment. This plug-and-play solution is simple to implement, low on upfront and ongoing costs and makes it possible to sustainably grow high quality plants year-round over a very long lifetime.



HI-Top Product Specifications:	HI-Top 320	HI-Top 320 HV	HI-Top 620	HI-Top 620 HV
Product Number	TG32B3-203-28-D1-K0BJ6	TG32B3-203-28-D1-L0BJ6	TG62B3-803-30-D1-K0BA6	TG62B3-803-30-D1-L0BA6
Input Voltage	100-277VAC	200-480VAC	100-277VAC	200-480VAC
Daisy-Chain Linking (w/ cords)	4 @ 120V / 7 @ 240V	14 @ 480V	2 @ 120V / 4 @ 240V	8 @ 480V
Power Consumption	320W	320W	610W - 630W	
Current (amps)	2.7 @ 120V / 1.4 @ 240V / 0.7 @ 480V		5.3 @ 120V / 2.6 @ 240V / 1.3 @ 480V	
Output / Efficacy	895 $\mu\text{mol/s}$ @ 2.8+ $\mu\text{mol/J}$		1734 $\mu\text{mol/s}$ @ 2.8 $\mu\text{mol/J}$	
Length x Width x Height	24" x 3" x 3" (610mm x 72mm x 77mm)		46" x 3" x 3" (1176mm x 72mm x 77mm)	
Weight (lbs.)	6 (bar) + 4 (driver) = 10 lbs		11 (bar) + 6 (driver) = 17 lbs	
Dimmable	0-10V + 12V aux power		0-10V + 12V aux power	
Projected Service Life / Warranty	50,000 hours / 5 year			 
Waterproof	IP65			

Usage Guidelines

Every application is unique, and our lighting experts will gladly provide you with a detailed, custom light plan (contact info@totalgrowlight.com). In the meantime, the following chart will provide helpful benchmarks:

	Light Level Target	Low	Medium	High			
	Plant Size	Small	Medium	Large			
	Examples	Germination, Cuttings, Microgreens 	Late Propagation, Lettuce, Basil 	Tomatoes, Moderate Cannabis Lighting 			
Supplemental (Greenhouse Sun + TotalGrow Lights)	Light Intensity (PPFD):	320W / 40 $\mu\text{mol/m}^2/\text{s}$	620W / 80 $\mu\text{mol/m}^2/\text{s}$	320W / 225 $\mu\text{mol/m}^2/\text{s}$	620W / 225 $\mu\text{mol/m}^2/\text{s}$		
	Coverage (sq. ft)	200	400	100	200	36	70
	Spacing (ft)	14	20	10	14	6	8.5
	Height (ft)	8-11	12-15	6-8	9-11	4	5-7
Sole Source (100% TotalGrow Lighting)	Light Intensity (PPFD):	120 $\mu\text{mol/m}^2/\text{s}$		270 $\mu\text{mol/m}^2/\text{s}$		1000 $\mu\text{mol/m}^2/\text{s}$	
	Coverage (sq. ft)	72	140	30	60	9	16
	Spacing (ft)	8.5	12	5.5	8	3	4
	Height (ft)	5-6	7-9	3-4	5-6	2	3

- Shorten growth cycles • Improve yields and quality • Reliably produce year-round
- Reduce 40-60% of energy compared to HPS • Long, low maintenance life
- Excellent light uniformly • Easy installation • Versatile, aesthetic, customizable spectrum