

## Manufacturer's Recommendations

1. Risk of fire or electric shock: turn off power before installing.
2. Always use product within Safe Working Load.
3. Designed for statically positioned hanging. Do not use for lifting or with dynamic positioning.
4. Do not walk or stand on product.
5. Always use manufacturer supplied and specified cables. Never use uncoated cables.
6. Do not apply oil or any other lubricant to the fastener or any other part of the cable assembly.
7. Please read instructions before installation.
- ⚠️ 8. Please avoid touching the leds, especially RED leds.

## Installation

### A Large Hook Mounted

#### 1 Hook Mount Accessories

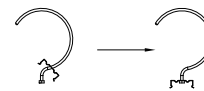


2. Fix the hooks with clips on the light bar.

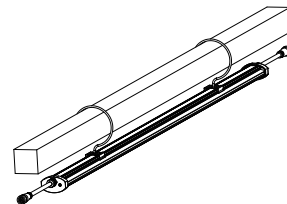


#### 2 Instructions

1. Put the clip through the hook.



3. Hang hooks with light bar on the overhead support.

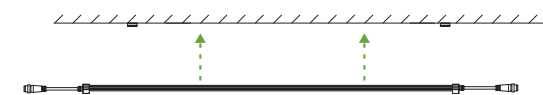


### B Surface Mounted

#### 1 Surface Mounted Accessories

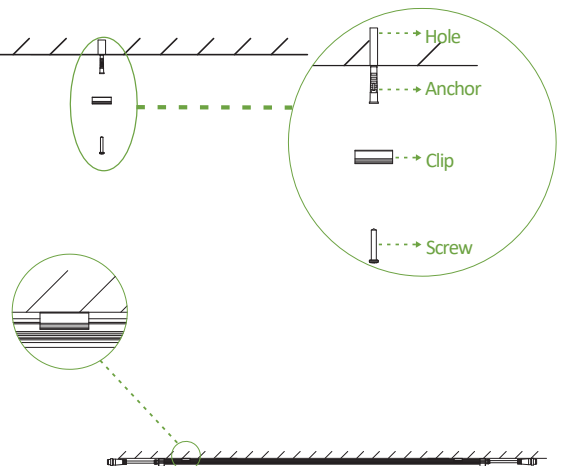


2. Insert the bar into the clips.



#### 2 Instructions

1. Drill holes in an overhead structure. For drywall or similar materials, insert anchors. Screw through the clips' holes into the structure or anchors.



**C Cable Suspended**

**1 Pendant Accessories (purchased separately)**



Steel Cables (2)



Length Adjusters (2)



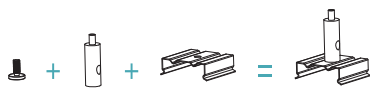
Bolts (2)



Clips (2)

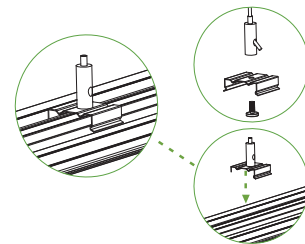
**2 Instructions**

1. Accessories instructions.

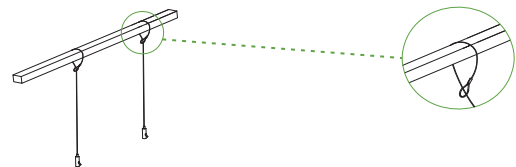


Clip with Hook

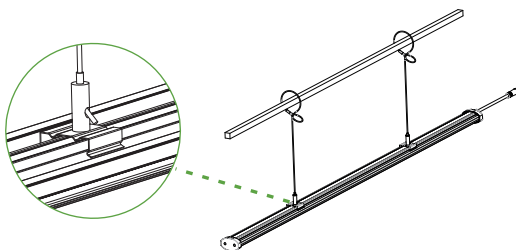
2. Fix the clips on the light bar.



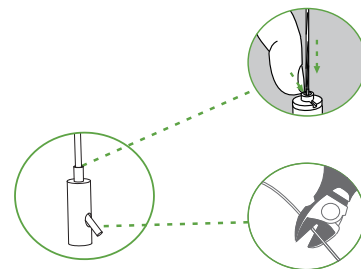
3. Adjust the position of the clips as needed.



4. Wrap the steel cables over the overhead support structure. Insert the clip and adjuster end through the loop of the cable.



5. Use the length adjuster to adjust the mounting height of the light.

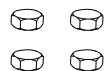


**D Small Hook Mounted**

**1 Small Hook Mount Accessories (purchased separately)**



Hooks (2)



Nuts (4)



Clips (2)



Clip with Hook

2. Insert the base of each hook into a clip and secure with 2 nuts each.



**2 Instructions**

1. Accessories instructions.



3. Hang the hooks onto an overhead wire rack, cable, or similar support structure.

