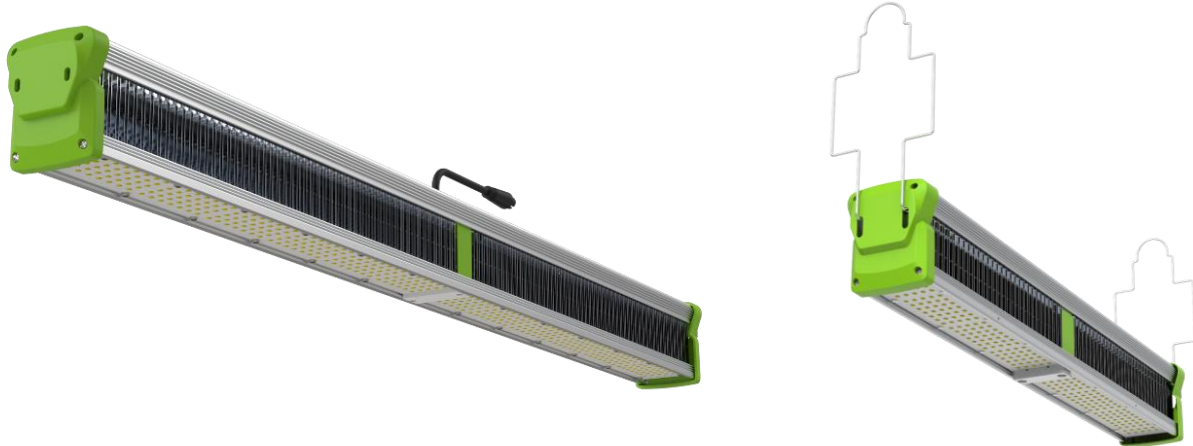


# PRODUCT SPECIFICATIONS



TotalGrow High Intensity Top-Light: 640 / 330

TG64B4 / TG33B4

Item Name	HI-Top 640 BF	HI-Top 640	HI-Top 640 HE	HI-Top 330	HI-Top 330
Item Number	TG64B4-R2J-25-D1-K0BA6	TG64B4-R0J-29-D1-K0BA6	TG64B4-R1J-31-D1-K0BA6	TG33B4-R0J-28-D1-K0BJ6	TG33B4-R1J-31-D1-K0BJ6
Product Type	<b>TotalGrow™</b> Top-Lighting Bar	<b>TotalGrow™</b> Top-Lighting Bar	<b>TotalGrow™</b> Top-Lighting Bar	<b>TotalGrow™</b> Top-Lighting Bar	<b>TotalGrow™</b> Top-Lighting Bar
Light Spectrum	R2J – Balanced Full Spectrum	R0J – Balanced Full Spectrum	R1J – Balanced Full Spectrum	R0J – Balanced Full Spectrum	R1J – Balanced Full Spectrum
Efficacy (µmole/J) <sup>1</sup>	2.5	2.9	3.1	2.8	3.1
Light Output (µmol/s) <sup>1</sup>	1610	1825	2000	910	1007
Power Consumption	640W	640W	640W	330W	330W
Input Voltage (VAC) <i>*HV models</i>	108-305 / 277-480V*	108-305 / 277-480V*	108-305 / 277-480V*	108-305 / 277-480V*	108-305 / 277-480V*
Max. Input Current at 115 / 230 / 277 / 480* VAC (A)	5.7 / 2.8 / 2.4 / 1.4*	5.7 / 2.8 / 2.4 / 1.4*	5.7 / 2.8 / 2.4 / 1.4*	2.9 / 1.4 / 1.2 / 0.7*	2.9 / 1.4 / 1.2 / 0.7*
Power Frequency of Driver	50 ~ 60 Hz	50 ~ 60 Hz	50 ~ 60 Hz	50 ~ 60 Hz	50 ~ 60 Hz
Power Factor (PF)	>0.95	>0.95	>0.95	>0.95	>0.95
Daisy-Chaining Maximum w/ Linking Cords at 115 / 230 / 277 / 480* VAC (A)	2 / 4 / 4 / 8*	2 / 4 / 4 / 8*	2 / 4 / 4 / 8*	4 / 8 / 8 / 16*	4 / 8 / 8 / 16*
Dimming (sourcing)	0-10 VDC	0-10 VDC	0-10 VDC	0-10 VDC	0-10 VDC
Dim off Voltage	0.9 V	0.9 V	0.9 V	0.5	0.5
Dimming Current Sourced	110 µA	110 µA	110 µA	300 µA	300 µA
12V auxiliary power	200 / 300* mA	200 / 300* mA	200 / 300* mA	200mA	200mA
Operating Temperature	0F to 110F	0F to 110F	0F to 110F	0F to 110F	0F to 110F
Service Life <sup>2</sup>	50,000 hours	50,000 hours	50,000 hours	50,000 hours	50,000 hours
Light Fixture - Height (inches)	4	4	4	4	4
Light Fixture - Width (inches)	3	3	3	3	3
Light Fixture - Length (inches)	43	43	43	25	25
Light Fixture - Weight (pounds)	11	11	11	6	6
Driver - Height (inches)	1.8	1.8	1.8	1.8	1.8

Driver – Width (inches)	5 / 3.5*	5 / 3.5*	5 / 3.5*	3.4	3.4
Driver – Length (inches)	11 / 17*	11 / 17*	11 / 17*	9	9
Driver – Weight (pounds)	6 / 7*	6 / 7*	6 / 7*	4	4
*HV models (277-480V)					

**Notes:**

1. Readings based on instantaneous measurements at 25C
2. Service life represents the number of hours when 50% of a group of identical light fixtures reaches 70% of its initial lumens at the given service temperature.

